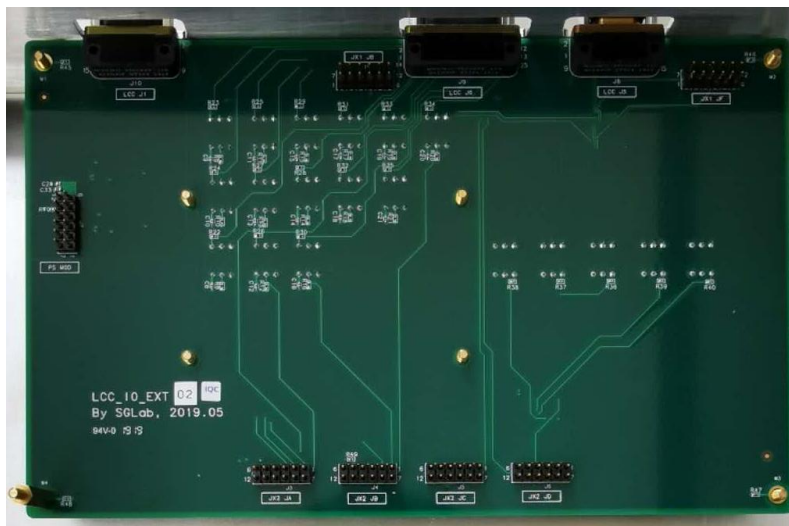


SOM Industrial Interface

- **Industrial application board, designed for direct stack-up with UltraZed SOM mainboard**
- **Board dimension: 203.32mm * 126.08mm**
- **3 x high reliability miniaturized industrial connectors for external interface**
- **2 x RS232**
- **2x CAN BUS**
- **Multiple high current Solid-State-Relay IO interfaces**



This SOM interface provides industrialized interfaces to UltraZed SOM module. It has exactly same footprint as the SOM mainboard, and stacks perfectly with minor modifications to replace the right-angle JX connectors by the corresponding vertical ones. It provides a good mix of interfaces for industrial applications. All external interfaces are routed to miniaturized high reliability connectors.

All specifications are achieved by design and careful parts selection.

Schematics and bills of materials available on request.

Certificate of Conformity available on request.

Certificate of Conformity for all parts, available on request.

Part Number	Description	Price
SG2011-LID	Industrialized SOM interface module with high reliability connectors	Contact Sales

Country available for purchase: Singapore

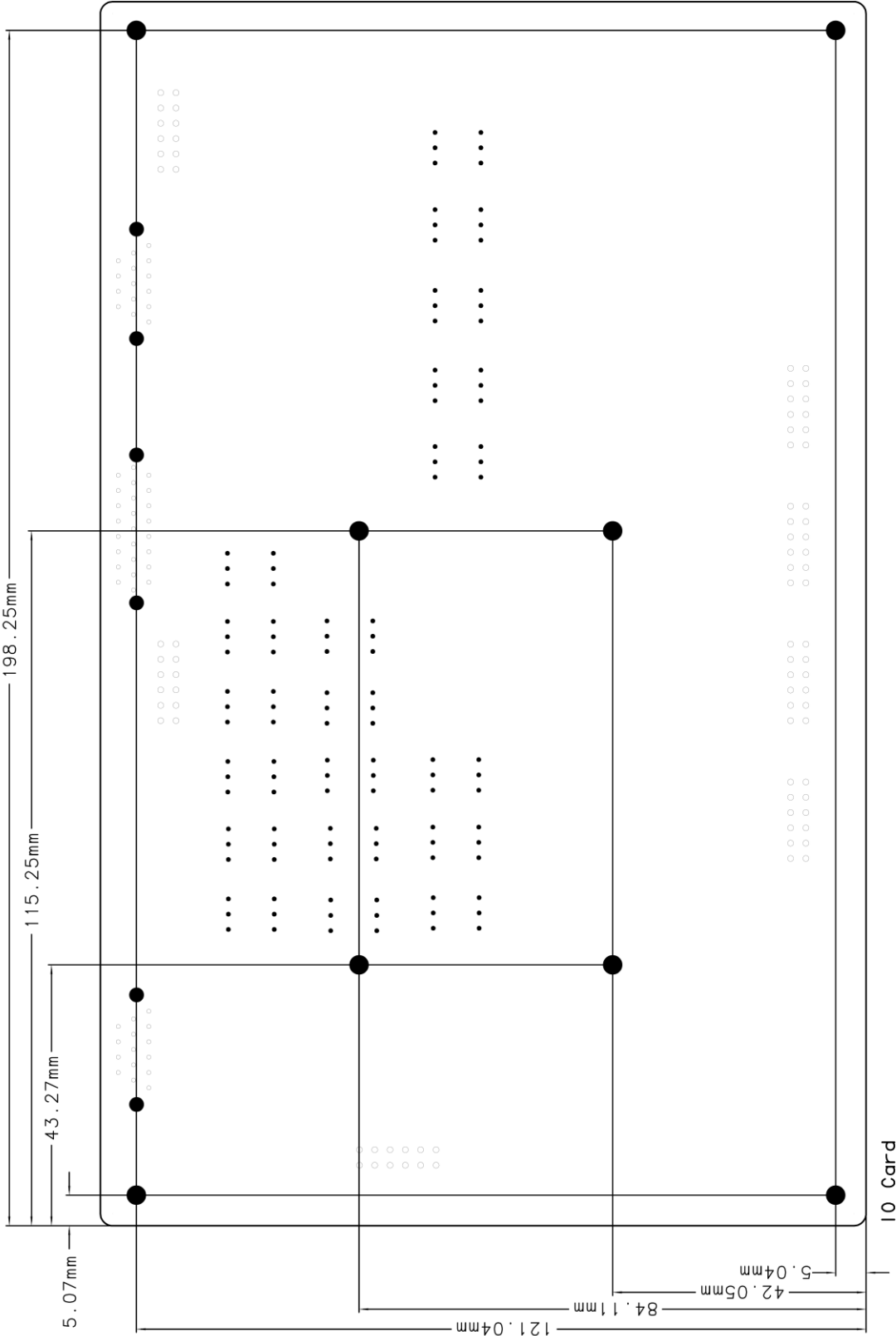
CONTACT INFORMATION

SGLab Pte. Ltd.
 81 Ayer Rajah Crescent
 #03-42, Singapore 139967
 Email: sales@sglab.sg

SOM Industrial Interface



Board Dimension



SOM Industrial Interface



Pinout (J8)	
Pin	Assignment
1	RXD1
2	TXD1
3	N.C.
4	GND
5	N.C.
6	N.C.
7	N.C.
8	TXD2
9	RXD2
10	GND
11	SSR_GPIO1_RTN
12	SSR_GPIO1
13	SSR_GPIO2_RTN
14	SSR_GPIO2
15	N.C.

Pinout (J10)	
Pin	Assignment
1	CANL0
2	CANH0
3	GND
4	CANL1
5	CANH1
6	GND
7	N.C.
8	N.C.
9	N.C.
10	N.C.
11	N.C.
12	N.C.
13	N.C.
14	N.C.
15	N.C.

Pinout (J9)	
Pin	Assignment
1	SSR_GPIO3
2	SSR_GPIO4
3	SSR_GPIO5
4	SSR_GPIO6
5	SSR_GPIO7
6	SSR_GPIO8
7	SSR_GPIO9
8	SSR_GPIO10
9	SSR_GPIO11
10	SSR_GPIO12
11	GND
12	SSR_GPIO13
13	SSR_GPIO13_RTN
14	SSR_GPIO14
15	SSR_GPIO15
16	SSR_GPIO16
17	SSR_GPIO16_RTN
18	SSR_GPIO17
19	GND
20	SSR_GPIO18
21	GND
22	SSR_GPIO19
23	SSR_GPIO19_RTN
24	SSR_GPIO20
25	SSR_GPIO21

Connector to be modified on SOM Mainboard
JX1 JB PMOD
JX1 JF PMOD
JX2 JA PMOD
JX2 JB PMOD
PX2 JC PMOD
JX2 JD PMOD